



# MONTHLY MEMBERSHIP PROGRESS REPORT

District 323 G1

Results as of: 4/30/2015

GMT: KAMLESH JAIN

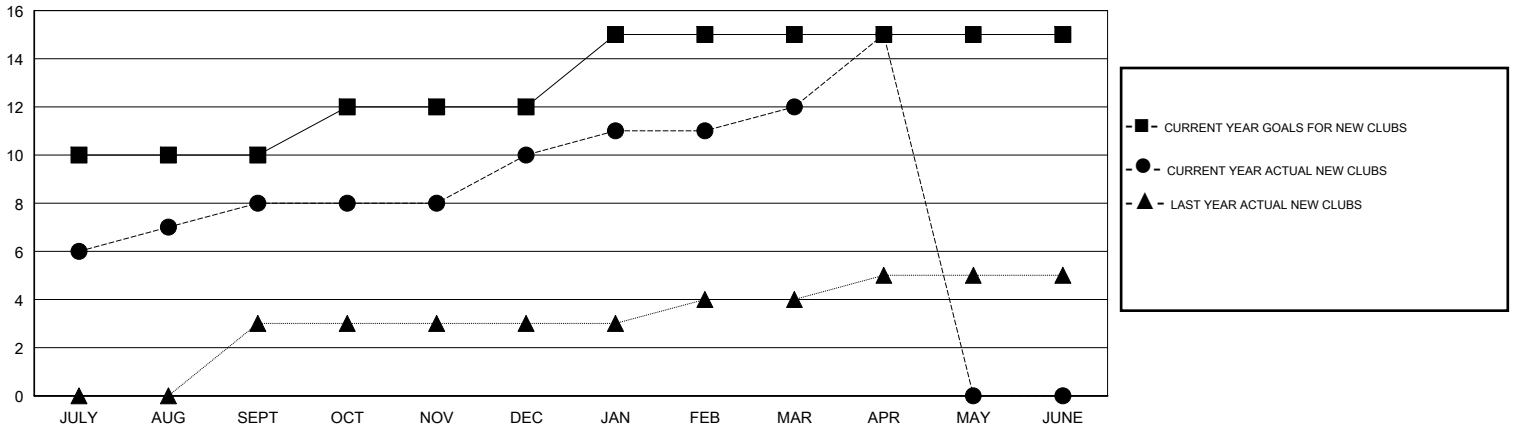
LOCATION INDIA

GMT CA 6

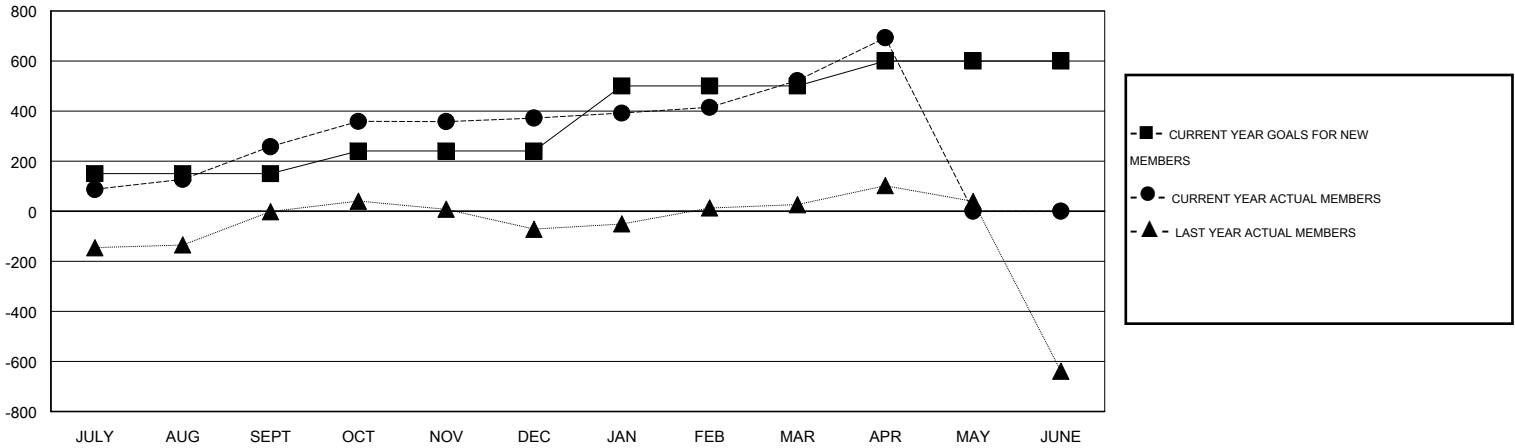
Clubs				
RESULTS FOR 2014-2015				
QUARTER	NEW CLUB GOAL	NEW CLUBS	DROPPED CLUBS	NET GAIN/LOSS
JULY/AUG/SEPT	10	8	0	8
OCT/NOV/DEC	2	2	0	2
JAN/FEB/MAR	3	2	0	2
APR/MAY/JUNE	0	3	0	3

Members				
RESULTS FOR 2014-2015				
QUARTER	NEW MEMBER GOAL	CHARTER AND NEW MEMBERS ADDED	DROPPED MEMBERS	NET GAIN/LOSS
JULY/AUG/SEPT	150	343	85	258
OCT/NOV/DEC	90	177	63	114
JAN/FEB/MAR	260	177	27	150
APR/MAY/JUNE	100	178	7	171

GOALS AND ACTUAL NEW CLUBS CUMULATIVE



GOALS AND ACTUAL MEMBERS CUMULATIVE



DROPPED CLUBS: 0
------------------

124 CLUBS OF 125 ADDED 1 OR MORE NEW MEMBERS

GENDER DISTRIBUTION	
MALE	3,016 (71.76%)
FEMALE	1,187 (28.24%)

DROPPED MEMBERS	
DECEASED	7
CLUB CANCELLED	0
OTHER	175
<b>TOTAL</b>	<b>182</b>

[CLICK HERE FOR HEALTH ASSESSMENT DATA](#)

FAMILY UNIT MEMBERS	1,407
HEAD OF HOUSEHOLD	623
NON-HEAD OF HOUSEHOLD	784